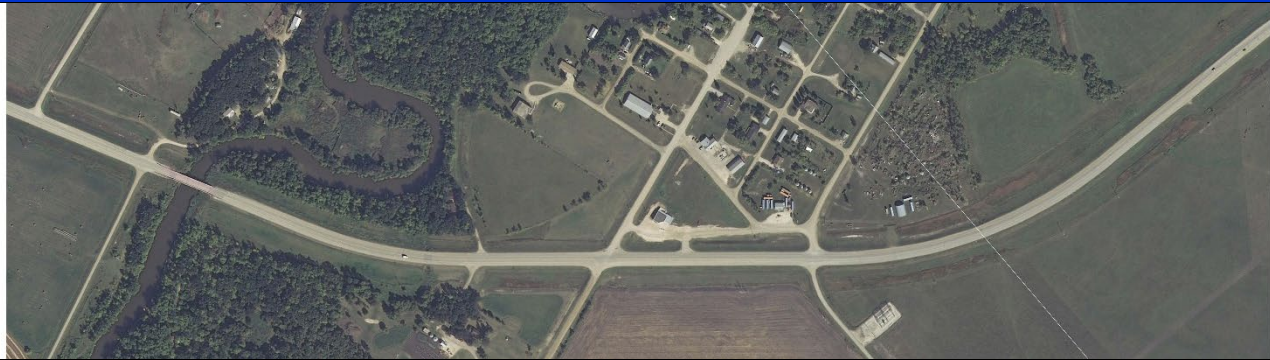


**PROVINCIAL TRUNK HIGHWAY 16 SURFACE
RECONSTRUCTION PROJECT AT WESTBOURNE, MB
IN THE MUNICIPALITY OF WESTLAKE-GLADSTONE**



Project Overview

Provincial Trunk Highway (PTH) 16 is a two-lane expressway that is part of the National Highway System (NHS) and is an important trade and tourism corridor. The surface reconstruction project proposes to realign the highway's horizontal curves to meet NHS standards and to increase the level of service and safety. The current cost estimate for the project is approximately \$19.96 million.

The scope of the project includes surface reconstruction of PTH 16 near Westbourne, MB, from 2.0 kilometres west of Provincial Road (PR) 242 to 1.8 km east of PR 242, for a total distance of 3.8 kilometres. The project includes horizontal realignment of four curves, fully paved shoulders and the realignment of Provincial Road (PR) 242,

with accompanying intersection improvements.

The project includes concrete culvert installations, grade widening and access rationalization (*which will involve removing the four existing accesses to PTH 16 – PR 242 West, PR 242 East, Road 49 West and 5th Street – and then combining them into two accesses at a new location*).

This work will be in addition to the overall reconstruction of the existing roadway.



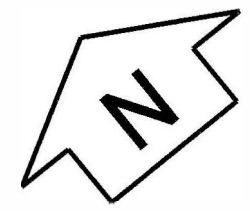
INTENDED PROJECT OUTCOMES

- support trade and commerce
- improve level of service
- improve public safety
- eliminate rutting
- improve ride quality
- install new pavement to restore serviceability
- reduce vehicle wear and travel times
- improve operations at the intersection
- improve key economic trade routes
- support RTAC level allowable gross vehicle weights
- improve reliability and efficiency of Canada's international and interprovincial trade flows

Current Status:

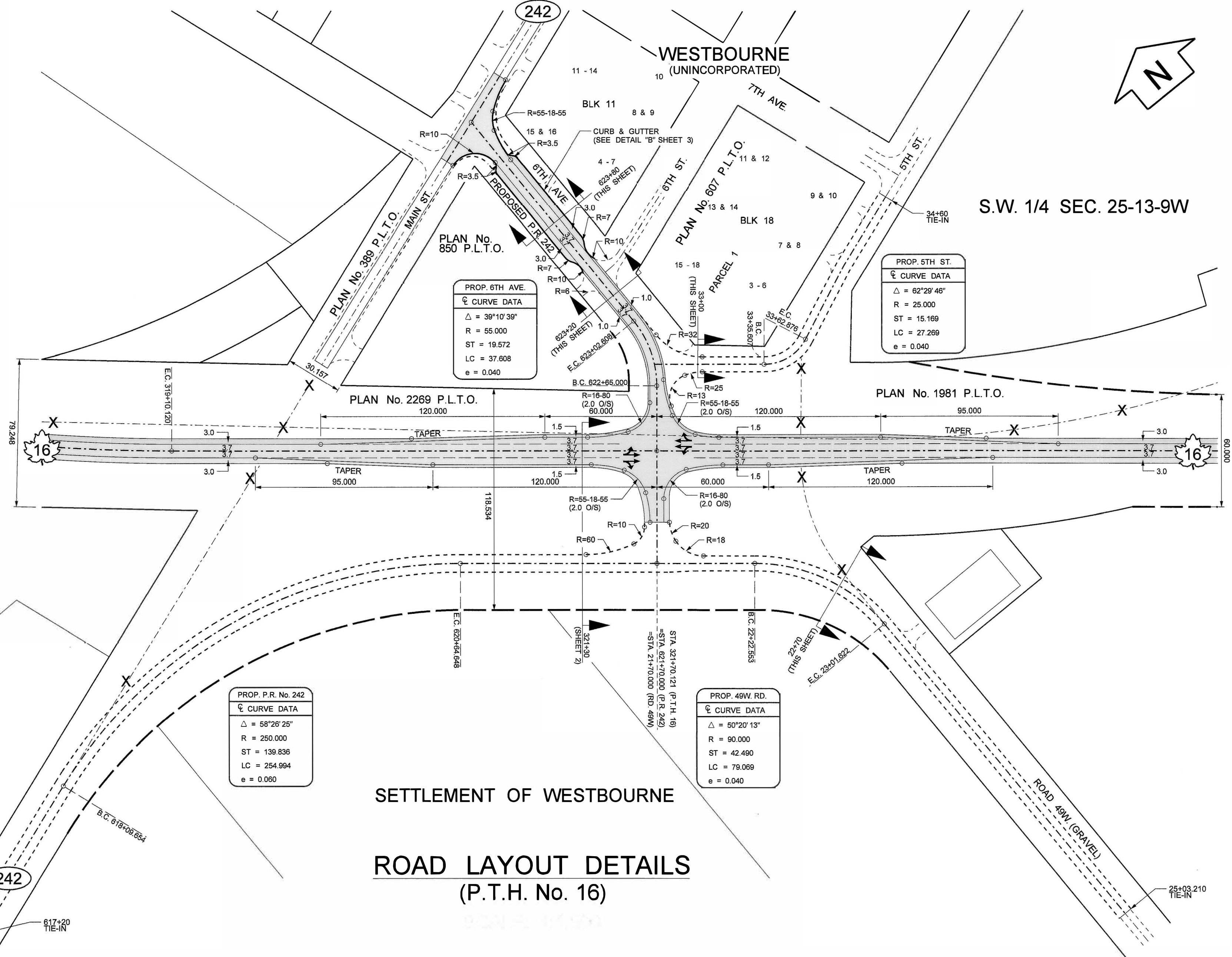
- Preparation work began over the winter and construction started in spring 2023.
- Drainage concerns will be reviewed and addressed as the project moves forward.
- Manitoba Transportation and Infrastructure has been communicating with the Municipality of Westlake-Gladstone regarding the municipal road relocation and project design updates.
- Discussions with landowners and businesses on 6th Avenue will continue regarding concerns and potential impacts.
- The project is on schedule and anticipated to be completed in fall of 2023.

Please contact the Western Region Highway Operations office at 204-239-3292 with any questions regarding the project or concerns.



WESTBOURNE
(UNINCORPORATED)

S.W. 1/4 SEC. 25-13-9W



PROP. 6TH AVE.	
C CURVE DATA	
Δ	$= 39^{\circ}10'39''$
R	$= 55.000$
ST	$= 19.572$
LC	$= 37.608$
e	$= 0.040$

PROP. 5TH ST.	
C CURVE DATA	
Δ	$= 62^{\circ}29'46''$
R	$= 25.000$
ST	$= 15.169$
LC	$= 27.269$
e	$= 0.040$

PROP. P.R. No. 242	
C CURVE DATA	
Δ	$= 58^{\circ}26'25''$
R	$= 250.000$
ST	$= 139.836$
LC	$= 254.994$
e	$= 0.060$

PROP. 49W. RD.	
C CURVE DATA	
Δ	$= 50^{\circ}20'13''$
R	$= 90.000$
ST	$= 42.490$
LC	$= 79.069$
e	$= 0.040$

SETTLEMENT OF WESTBOURNE

ROAD LAYOUT DETAILS

(P.T.H. No. 16)

PTH 16 at Westbourne

Diagram showing roadway design on Google Earth imagery

Legend

- Accesses to be removed
- Proposed accesses to be removed

